

Southern Tier Social Care Network Updates

Thursday, August 22nd
12:00pm – 1:00pm

CONNECT • COLLABORATE • INNOVATE



Goals for Today

- **1115 Waiver Overview & Recent Updates**
- **Workforce Investment Organization (WIO) Updates with Iroquois Health Association**
- **Intro to Social Care Network Functions**
 - Care Delivery Models
 - Unite Us
 - Contract Requirements
- **Waiver Timeline & Next Steps**

2024 NYS 1115 Waiver Elements

Waiver Focus Areas	Eligible Applicants	Funding
Social Care Networks / Health Related Social Needs	Regional CBO aggregators, roughly nine total across NYS with up to \$500M of the \$3.6B dedicated for infrastructure.	\$3.2B
SCN Infrastructure	For SCN set-up costs in each region, including but not limited to initial network infrastructure, referral system(s), staffing, coordinating CBOs, capacity building for CBOs, and contracting.	\$500M
Health Equity Organization	One singular statewide health equity entity.	\$125M
Medicaid Hospital Global Budget Initiative	Financially distressed safety net hospitals in NYC region, distributing \$550M/yr for 3.5 years.	\$2.2B
Workforce Investment Organizations (WIO)	Three statewide workforce agencies that can support training, recruitment, tuition reimbursement support, and career planning.	\$694M

Acronyms & Abbreviations

Community Based Organization (CBO)

A not-for-profit charitable organization that works at the local level to meet community needs and is registered as a 501(c)(3)

Health Related Social Need (HRSN)

Drivers of health outcomes and directly impact health inequalities, including but not limited to nutrition, housing, transportation.

Social Care Network (SCN)

Regional based lead entities who will coordinate the delivery of HRSN services to Medicaid members by participating CBOs, with support from shared data & tech.

Enhanced Services (aka Level 2 Services)

****NEW**** Medicaid services available for qualifying Medicaid members based on needs identified in the HRSN screen.

If you've not read the waiver...

Enhanced Services

- New **Enhanced Services** will be available and reimbursable from Medicaid starting January 2025 (est.) Enhanced Services are **only available to eligible populations** as defined by NYS DOH
- Enhanced Services have been predefined by NYS DOH. Additionally, the associated Fee Schedule will also be predefined by NYS (not yet published)
- CBOs who deliver Enhanced Services will be reimbursed by the Social Care Network (Care Compass Collaborative)

HRSN Screens

- To determine who is eligible for Enhanced Services, **HRSN Screens will be conducted**. NYS expects EVERY Medicaid member will be screened each year using a standardized screen. HRSN screens will also be reimbursed by the Social Care Network.
- HRSN screens must be completed within the SCN closed loop referral system to receive reimbursement.

Infrastructure Funding

- One goal is to ensure that all Medicaid members have access to the Enhanced Services. SCNs will receive infrastructure funds meant to ensure services are available throughout the region (e.g., capacity building, service creation, etc.)
- Care Compass will leverage a series of stakeholder meetings and surveys to evaluate current service delivery capabilities of the region to determine where/how to utilize Infrastructure Funds.

Closed Loop Referral System Requirements (Unite Us)

- Participating organizations must collaborate using a closed loop referral system. Care Compass will provide the system at no cost and provide funding for successful adoption or system integration.



WIO Overview

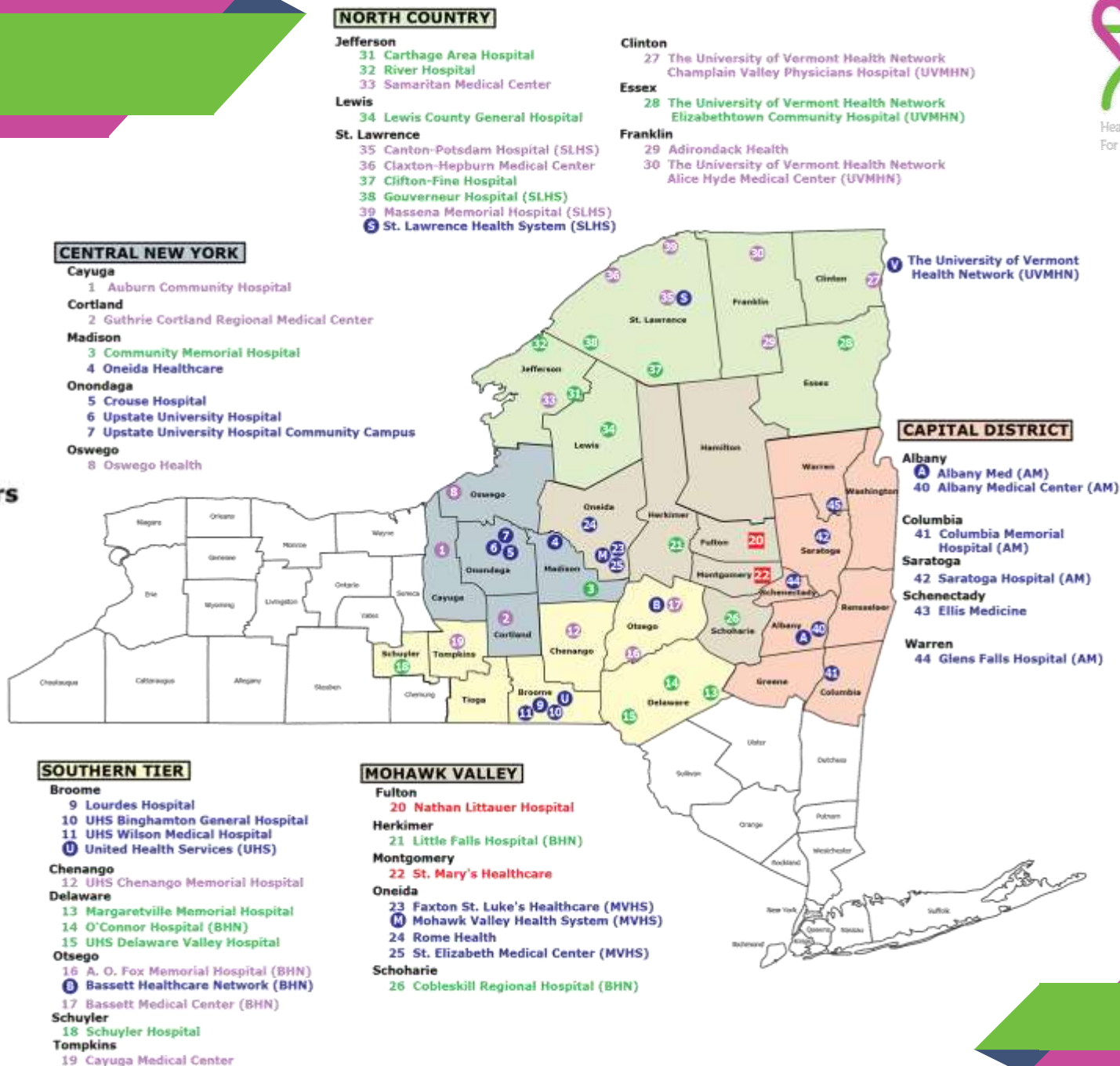
**Iroquois Health
Association Tosha
Grimmer**

Caring Gene[®] Healthcare Career Pathways, Inc.



Iroquois Healthcare Alliance Members

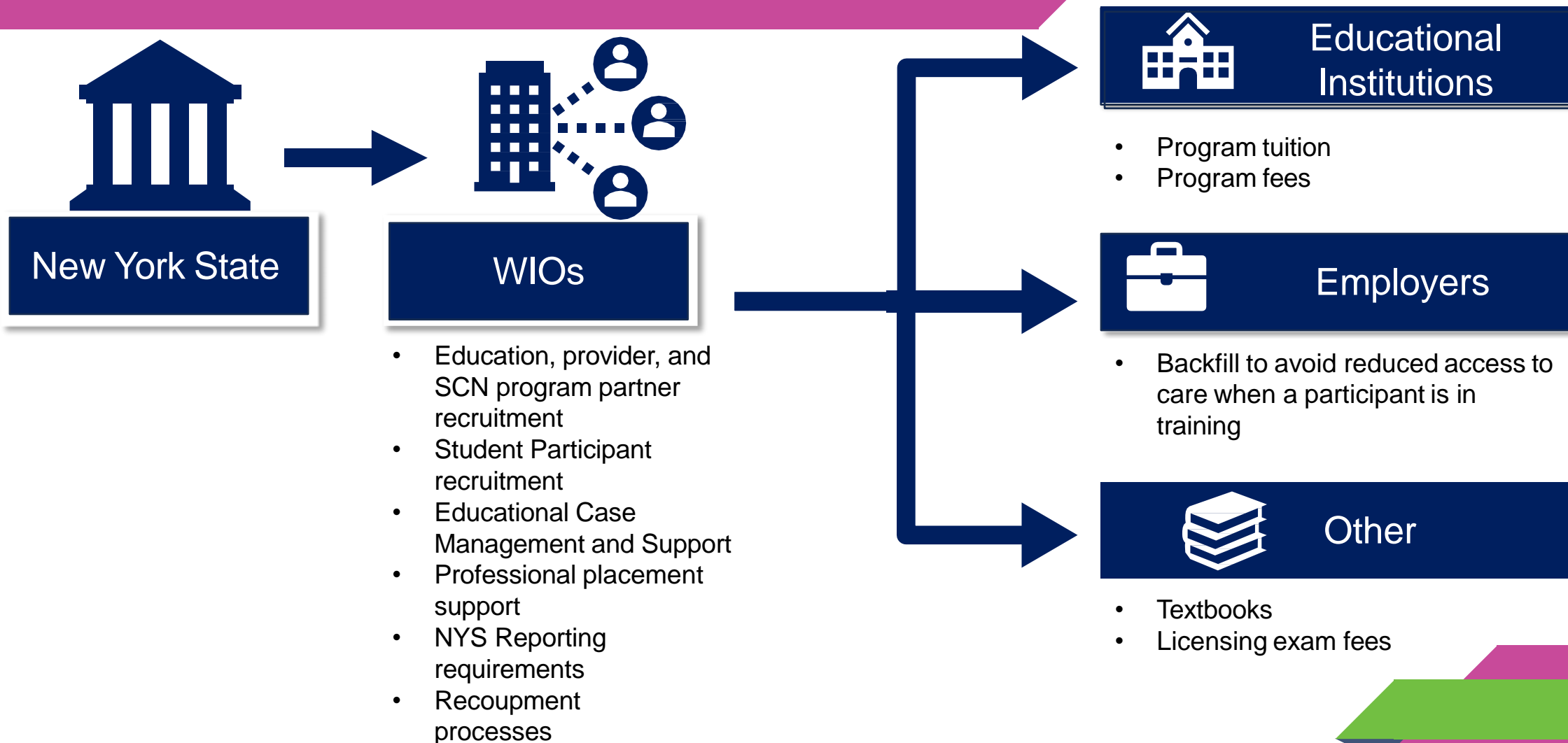
- Critical Access Hospitals (13)
- Sole Community Hospitals (14)
- Medicare Dependent Hospitals (2)
- Hospitals & Health Systems (21)



WIO 2.0 The Career Pathways Training Program:

- 1115 Waiver Approval establishes a Career Pathways Training (CPT) Program to be administered by three high performing Workforce Investment Organizations (WIOs).
- Funding for the program totals \$646 million over 3 years (April 1, 2024 to March 31, 2027).
- Broad program that spans a multitude of providers.
- Program will fund 100% of education and support services to two categories of a career pipeline:
 - ▷ New Careers in Healthcare
 - ▷ Healthcare career advancement
- Participants will be required to give a 3-year service commitment to Medicaid providers that serve at least 30 percent Medicaid members and/or uninsured individuals.

WIO 2.0: Workforce Funding Flow



WIO Regions Across NY State

Workforce Investment Organizations (WIO)

WIOs will be selected to support regional management of the CPT program, with one WIO per region.

WIO Regions

Counties

Region 1:

- Hudson Valley
- New York City
- Long Island

Dutchess, Orange, Putnam, Rockland, Sullivan, Ulster, Westchester, Bronx, Kings, Queens, New York, Richmond, Nassau, Suffolk

Region 2:

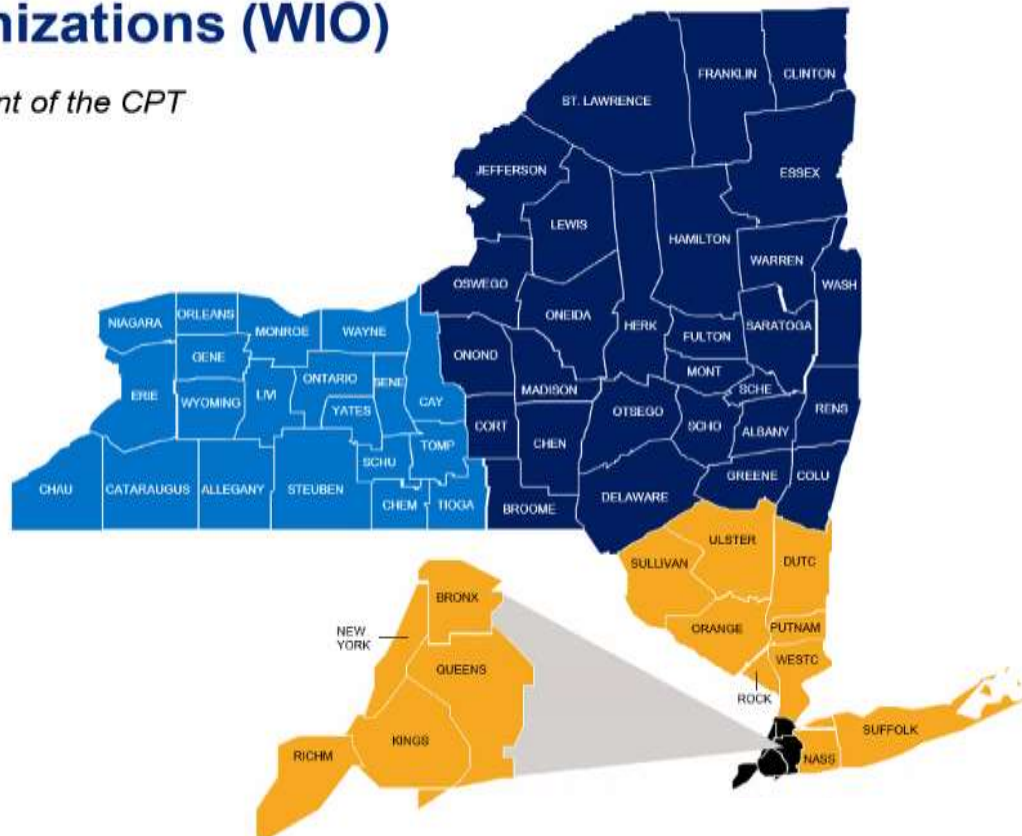
- North Country
- Capital Region
- Southern Tier
- Central New York

Clinton, Essex, Franklin, Fulton, Hamilton, Jefferson, St. Lawrence, Lewis, Warren, Washington, Albany, Columbia, Greene, Rensselaer, Montgomery, Saratoga, Schenectady, Schoharie, Broome, Chenango, Delaware, Otsego, Tioga, Tompkins, Cortland, Herkimer, Madison, Oneida, Onondaga, Oswego

Region 3:

- Finger Lakes
- Western New York

Allegany, Cayuga, Chemung, Genesee, Livingston, Monroe, Ontario, Orleans, Schuler, Seneca, Steuben, Wayne, Wyoming, Yates, Cattaraugus, Chautauqua, Erie, Niagara



WIO 2.0 The Career Pathways Training Program:

■ Eligible Healthcare Titles (2024-2025):

Nursing:

- Licensed Practical Nurse
- Associate Registered Nurse
- Registered Nurse to Bachelor of Science in Nursing
- Nurse Practitioner

Professional/Technical:

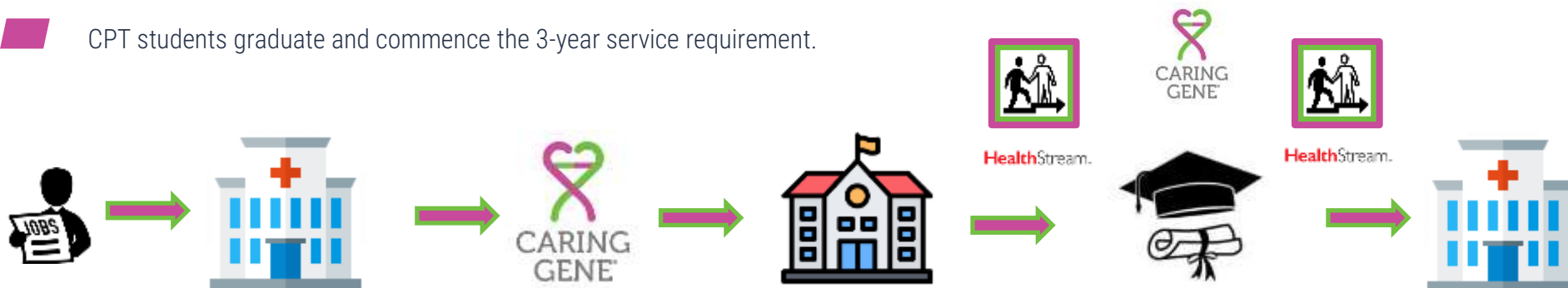
- Physician Assistant
- Licensed Mental Health Counselor
- Master of Social Work
- Credentialed Alcoholism and Substance Abuse Counselor
- Certified Pharmacy Technician
- Certified Medical Assistant
- Respiratory Therapist

Frontline Public Workers:

- Community Health Workers
- Patient Care Managers

Career Pathways Training (CPT) Student Journey – Currently working in Healthcare OR New to working in Healthcare

- Caring Gene® Healthcare Career Pathway scholarship program is shared with employees via HR department, staff meetings, and other provider communication methods OR through High School Guidance offices, College Financial Aid offices, local Workforce Development boards, SCNs, and other community-based organizations.
- Interested CPT participants go to: caringgene.org and apply for the full tuition scholarship (after Pell Grants and TAP awards are allocated) for the desired job title they are seeking
- Caring Gene Educational Case Managers contact CPT students to complete onboarding tasks: 1) acceptance into accredited program, 2) completion of the FAFSA and TAP, 3) Signing of the Service Commitment Contract.
- CPT Students receive login credentials and have immediate access to HealthStream courses.
- Caring Gene Educational Case Managers coach CPT students throughout their academic program.
- Providers apply for backfill payments to cover current CPT student time working in Healthcare.
- CPT students complete academic program and apply for their licensing exam.
- CPT students graduate and commence the 3-year service requirement.



Program Infrastructure and Operations

- Establish partnerships with 30% Medicaid healthcare providers.
- Establish partnerships with educational institutions (BOCES, High Schools, 2-year and 4-year colleges and Graduate Schools) offering programming with 13 eligible titles for tuition reimbursement and textbook/supplies purchasing.
- Hire Educational Case Managers to recruit and mentor eligible students from program entry to job placement, including support for pre-requisite skills, ongoing academic support and licensing exam preparation.
- Market full tuition, books, and supplies scholarship program to students for New Careers and current healthcare employees interested in Career Advancement with providers, educational institutions, local Workforce Boards, SCNs, and other community-based organizations.
- Provide Learning Management System and educational and soft skill supports for students through HealthStream.
- Reimburse providers with backfill payments for current staff enrolled in CPT.
- Support CPT students through the job search process until employed with an approved 30% Medicaid provider and monitor job placement through the 3-year service commitment.

Contact Information

- Tosha Grimmer, Executive Director
Email: tgrimmer@iroquois.org
Office: 518-348-7431
Cell: 518-368-2836
- Eileen Murphy, Senior Director, Special Projects:
Email: emurphy@iroquois.org
Office: 518-348-7447

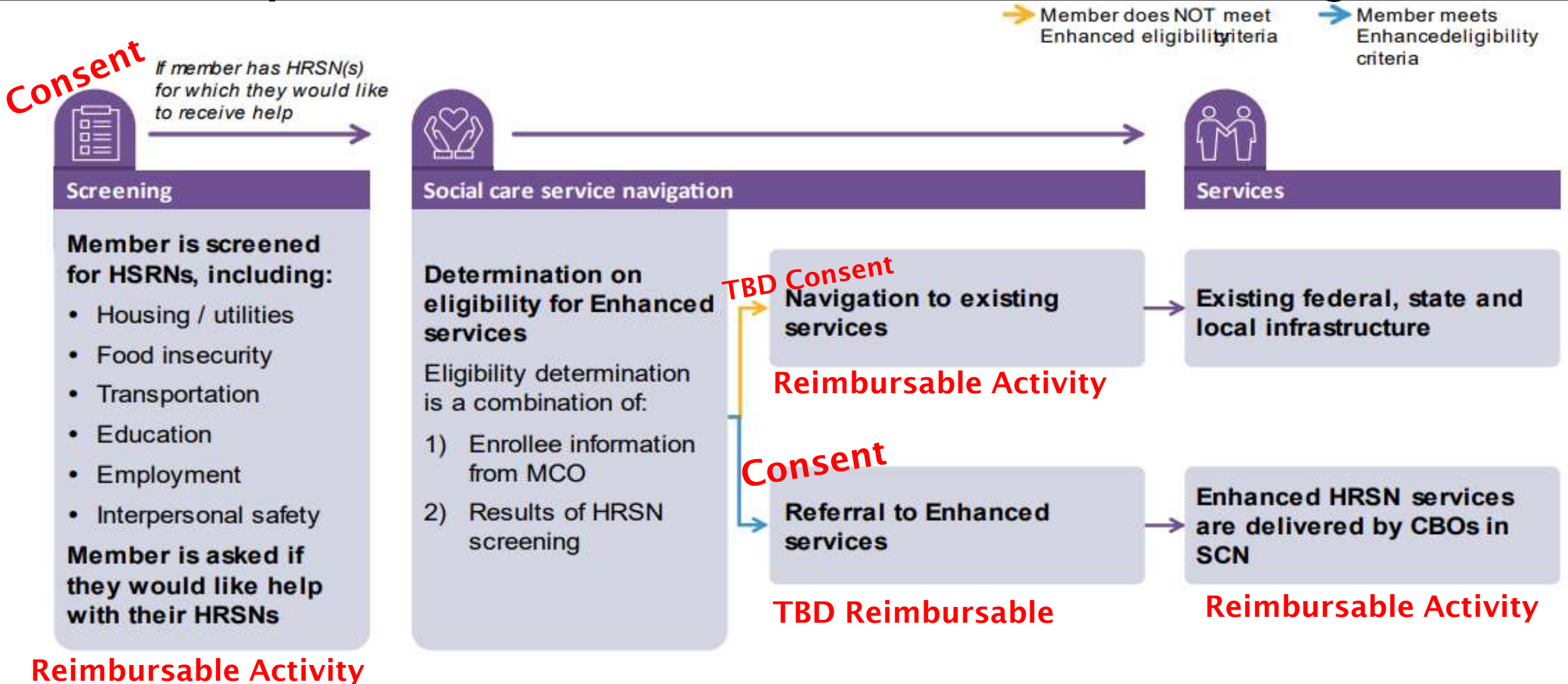


Social Care Network (SCN) Care Delivery Model & Summary of Enhanced Services

Mark Ropiecki, Executive Director

1115 Waiver Workflow

This slide represents how \$3.2B will be invested in NYS through March 2027.



Enhanced Services

Category	Service Name	Description
Screening	Screening	Social needs screening of Medicaid member using the CMS AHC HRSN screening tool.
Multi Domain	Navigation Case Management	Linkages to other local, state, and federal benefits and programs.
Multi Domain	HRSN Case Management	Case management, outreach, referral management and education, including linkages to other state and federal benefit programs, benefit program application assistance, and benefit program application fees. Connection to clinical case management. Connection to employment, education, childcare, and interpersonal violence resources. Follow-up after services and linkages.
Housing	Navigation	Housing navigation services.
Housing	Community Transitional Supports	One-time transition and moving costs (e.g., security deposit, first month's rent, brokers fees, utility activation fees, movers, relocation expenses, pest eradication, inspection fees, pantry stocking, and the purchase of household goods and furniture.)
Housing	Utility Setup / Assistance	Utility costs including activation expenses and back payments to secure/keep utilities. Service is limited to individuals receiving rent/temporary housing.
Housing	Rent / Temporary housing for up to 6 months	Rent / temporary housing (+/- utilities) for up to 6 months. Limited to individuals transitioning out of institutional care/congregate settings or individuals who are homeless, such as nursing facilities, large group homes, congregate residential settings, IMDs, correctional facilities, and acute care hospitals; individuals who are Medicaid high utilizers who are homeless as defined by 24 CFR 91.5; and youth transitioning out of the child welfare system including foster care.

Enhanced Services

Category	Service Name	Description
Housing	Pre-tenancy and tenancy sustaining services	Pre-tenancy and tenancy sustaining services, including tenant rights education and eviction prevention.
Housing	Home remediation	Repairs or remediation for issues such as mold or pest infestation if repair or remediation provides a cost-effective method of addressing occupants' health condition, as documented by a health care professional, and <u>remediation is not covered under any other provision such as tenancy law.</u>
Housing	Home accessibility and safety modifications	Medically necessary air conditioners, humidifiers, air filtration devices, and refrigeration units as needed for medical treatment and prevention. Minor medically necessary home accessibility modifications.
Housing	Medical respite	Medical respite is a temporary setting for homeless individuals that will provide lower-intensity care setting for individuals who would otherwise lack a safe option for discharge and recovery or would require a hospital stay.
Nutrition	Nutritional counseling and classes	Nutrition counseling and education, including on healthy meal preparation.
Nutrition	Medically tailored meal (MTM)	Medically Tailored or Clinically Appropriate meals delivered to an individual's home or private residence for up to 6 months.

Enhanced Services

Category	Service Name	Description
Nutrition	Fruit and veggie rx	Medically tailored or nutritionally-appropriate food prescriptions (e.g., fruit and vegetable prescriptions, protein box), delivered in various forms such as nutrition vouchers and food boxes, for up to 6 months.
Nutrition	Pantry stocking	Pantry stocking, fresh produce and nonperishable groceries for up to 6 months. For children and pre/postpartum populations.
Nutrition	Cooking supplies	Cooking supplies that are necessary for meal preparation and nutritional welfare of a beneficiary when not available through other programs (e.g., pots and pans, utensils, microwave, refrigerator.)
Transportation	HRSN Public & Private Transportation	Reimbursement for HRSN Public & Private Transportation to connect HRSN services & HRSN case management activities listed above. A final list of services and definitions will be listed in the CMS 1115 NYHER Waiver Approval and in the SCN program manual.



SCN Data & IT

Central Platform

Ken Green, Senior IT Manager

Expected Functionality for SCN Central IT Platform

Why do we need an SCN IT Platform? It's a mandatory element of the waiver, to achieve:

- Document consent for screening/referral to services
- Display member information including eligibility status for Enhanced Services
- Display previous screening and referral data for the member
- Collect the NY State approved screening data
- Allow for navigator to send and receive referrals within the platform
- View/Update referral status
- Add notes to member record
- System will generate a claim that is sent to the SCN for all eligible/billable services

Who will use the SCN IT Platform?

Individuals who complete HRSN screens, Social Care Service Navigations, or receive Enhanced Services referrals will be users of the SCN IT Platform, Unite Us.

How will they be trained / onboarded?

Organizations will need to identify who will provide these services and work with Care Compass to schedule training. Care Compass will provide reimbursement for staff training and onboarding. Note: CBO Onboarding has not yet commenced, however organizations can notify Care Compass now if they intend to adopt the Unite Us platform. There is an initial Unite Us demo being scheduled for next week to overview system functionality. The invitation is being sent today, if you do not receive it please contact Deana Hodges DHodges@carecompassnetwork.org



SCN Contracting

Andrea Rotella, Director of
Compliance

Anticipated SCN Contracting Elements

(TBD finalization of SCN Program Manual)

1 Participation Agreement

- Allows for entry to the SCN
- Contains legalese
- Outlines obligations of the parties

2 Statements of Work (SOWs)

- Must have Participation Agreement
- Outlines work to be done, payment terms, and obligations of the parties
- May have more than one

3 Business Associate Agreement (BAA)

- Outlines how the parties will protect PHI and PII

4 Data Use Agreement (DUA)

- Outlines how data will be shared and used by the parties

5 Agreements with the WIO and RHIO

- CBO contracts with WIO for workforce funding
- CBO Participation Agreement with RHIO

Other SCN Contract Requirements

- Fraud, Waste, & Abuse Policy
- HIPAA Policies & Training
- Unite Us adoption/integration

Note: Example policy templates and trainings are available as a free resource of the Care Compass Open Network.

Estimated Timeline & Next Steps

August / September

SCN Contract with NYS / MCO

DOH Finalizes Operating Manual

Fill Out SCN Governance

SCN Contract with CBOs

October / November / December

SCN Receives Startup Funds

Train SCN Navigators
(e.g., CHWs)

Infrastructure Funding Distributions

Onboard / Integrate with Unite Us

January 2025

MCO provides PMPM for Enhanced Services

Enhanced Service Delivery Begins

Enhanced Service Payments

Helpful Resources

NYS Social Care Network Website

New NYS website housing official 1115 waiver documents and information for each of the Social Care Networks.

https://www.health.ny.gov/health_care/medicaid/redesign/sdh/scn/index.htm

Southern Tier WIOs: Finger Lakes PPS & Iroquois Health Association (Caring Gene)

www.flpps.org (Steuben, Chemung, Schuyler)

<https://caringgene.com/> (Broome, Cortland, Chenango, Delaware, Otsego, Tioga, Tompkins)

Care Compass SCN Helpdesk

We need your input! Please submit any questions you have regarding the 1115 waiver and our team will reply, elevate questions to NYS, or include feedback in future planning.

SCNHelpDesk@carecompassnetwork.org

Care Compass Unite Us Implementation Support

Deana Hodges- Care Compass Unite Us IT Program Lead DHodges@carecompassnetwork.org

Care Compass Open Network:

Care Compass Network offers free training and collaboration, including the upcoming Regional Trauma Informed Care symposium! Amiera Afify aaify@carecompassnetwork.org